

Bead Loom Bracelets

Materials

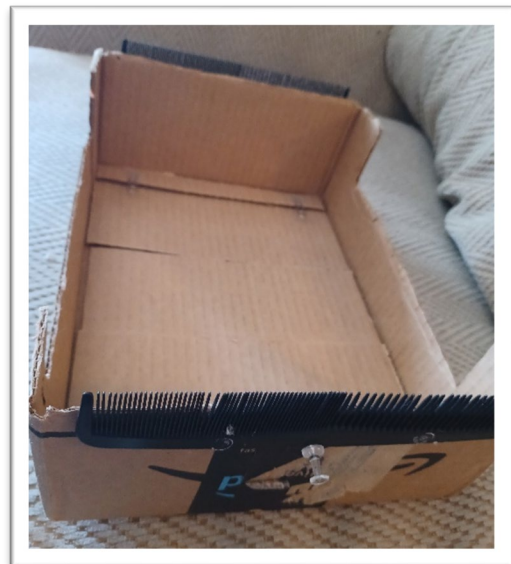
- Bracelet Pattern
- Beading Thread (0.15mm or 6LB)
- Bead Needle (Size 10, 12, or 13)
- Assorted Color of Seed Beads (11/0)
 - Note seed beads come in different shapes, make sure all colors are same shape
- Loom Box
- Chain for bracelet
- 2 Slider Clasps or Ribbon Crimps (width close to end width of bracelet)
- 1 Lobster Claps
- 2" of chain
- 2 jump rings



How to Make a Loom Box

- Old Shoebox, cardboard box
- Old combs (dollar stores have these)
- 4 short/dulled screw or small knob shape item
- Hot Glue

Place the box so that the short edges are facing you and the long edges are on the left and right side. Hot glue the two combs on the short ends of the box. The comb should be upside down so the teeth stick up. Position the teeth $\frac{1}{4}$ " - $\frac{1}{2}$ " above the edge of the box. The teeth will be what holds the loom threads. If you plan on using smaller beads like 11/0 have the narrow teeth closer to the center, if you plan on using larger beads like 5/0 place the wide teeth closer to the center. Glue 2 knobs on each edge of the comb, these will help hold the strings in place.



How to Make the Bracelet

The idea of this bracelet is weaving beads together. The beads are strung on a horizontal string and secured in place on the vertical loom strings (ones we wrap on the box). If you have colors that don't exactly match up with the pattern you can use a black and white version. The black and white setup is to the right, a paper plate has the beads separated with hot glue.



1. Set up the loom box.

Use thread straight off the spindle, do not cut yet. Wrap the thread around the knob a few times until it feels secure. Stretch thread through a needle groove, across the frame, around opposite needle groove and back down. This will give you 2 vertical threads. The number of vertical threads you need is (Bracelet Bead Width + 1). Once you have enough vertical threads secure end around closest knob then cut.



2. Reading Pattern and Threading Beads

Take a long piece of string and tie it to the bottom of the furthest left vertical thread, leave about an inch from the edge of the box. On the other end of the string tie on your beading needle. Because we tied the string at the bottom we'll read the pattern bottom to top. You can either read it Left to Right, or Right to Left. If you read left to right, the bracelet will appear just like the pattern. If you read right to left it will appear mirrored until it's cut loose from the loom, basically you'll be working with the bottom facing you.



3. Place beads on loom

Slide the beads underneath the vertical threads so each bead sits in a gap. Once in place, use your finger to push the beads up. Take your needle and now travel right to left through the beads. Make sure the needle goes above the vertical thread; this is what locks the beads in place.

4. Repeat

Repeat 2 and 3 stacking the beads higher and higher until the desired length of the bracelet is reached. Some patterns are repeatable, if you reach the end of the pattern and still want the bracelet longer, just start from the bottom of the pattern again.

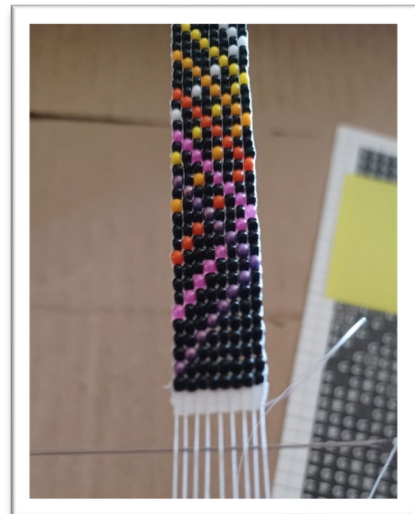
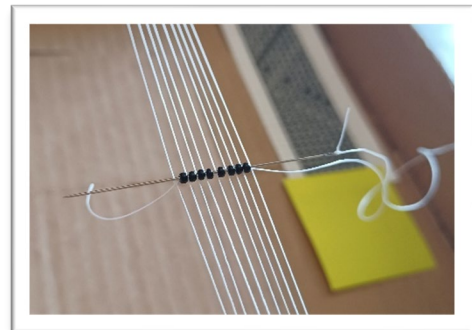
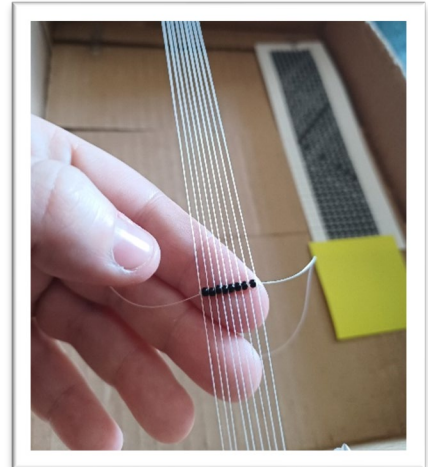
5. Ending the bracelet

Bracelets should end ~2 inches shorter than desired length to give enough space for the clasps and chains.

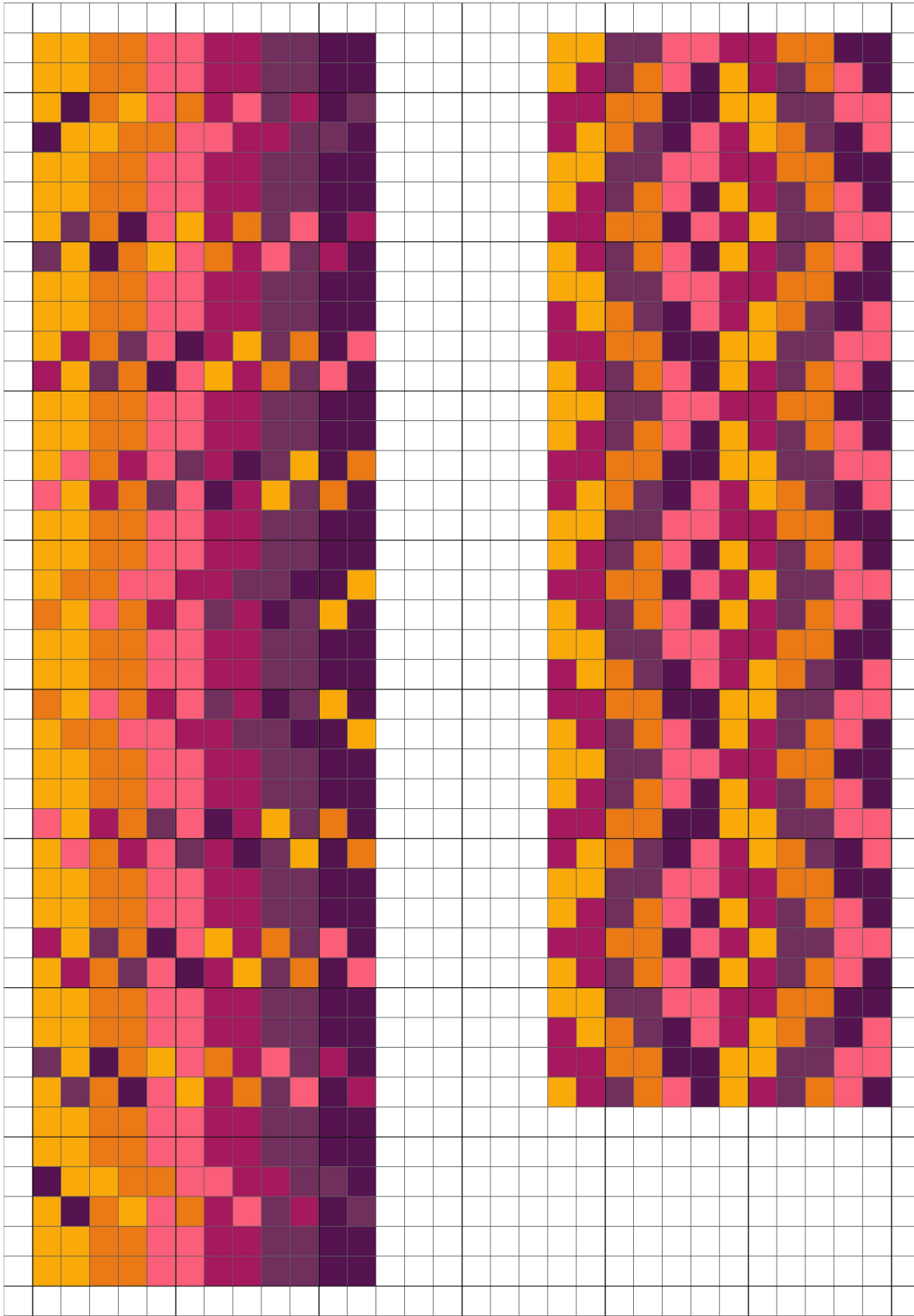
When using the slider clasps you'll wrap the loose thread into a few finished rows of beads and make a small knot somewhere. Cut the bracelet loose and slide the slider clasps over the top and end beads.

If using the ribbon clasps you'll weave your horizontal thread over and under the loom threads on top and bottom, making about ¼" thick woven ribbon. Trim threads and glue the woven ribbon, then attach the ribbon clasp.

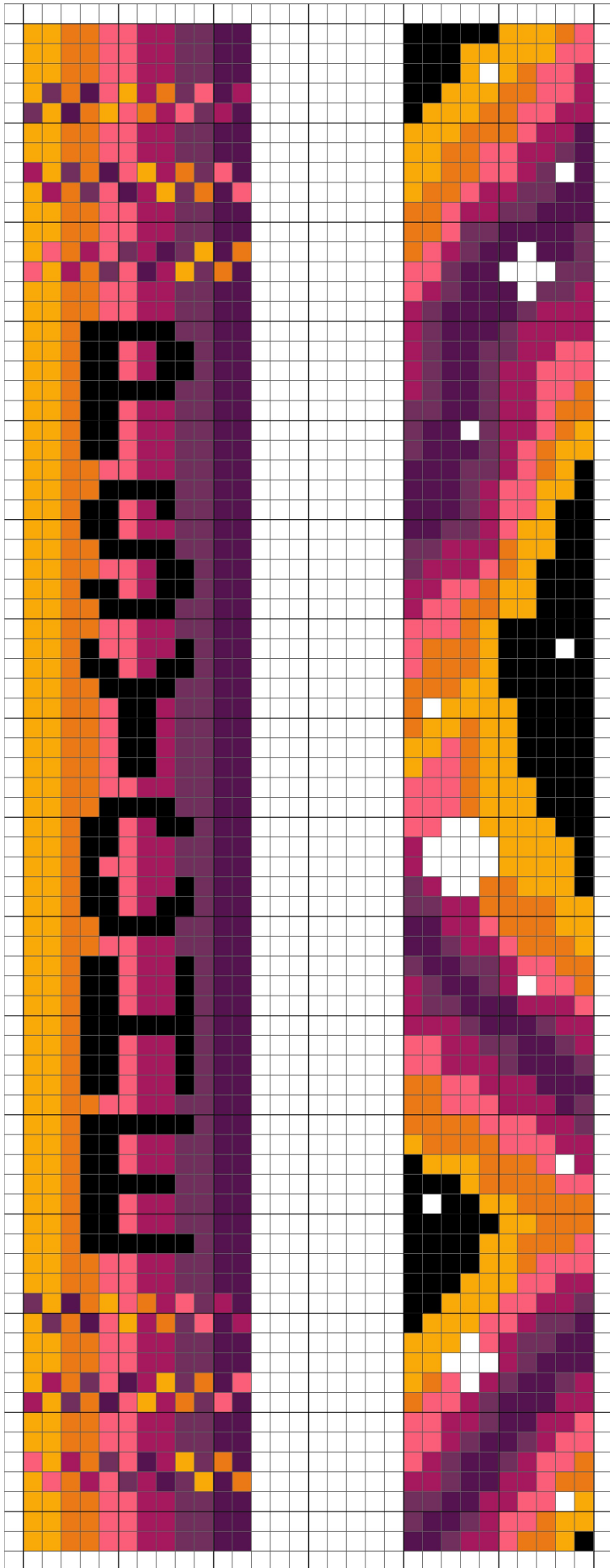
Add a lobster clasp on one end with a jump ring. Add a chain to the other end with a jump ring. Finished.



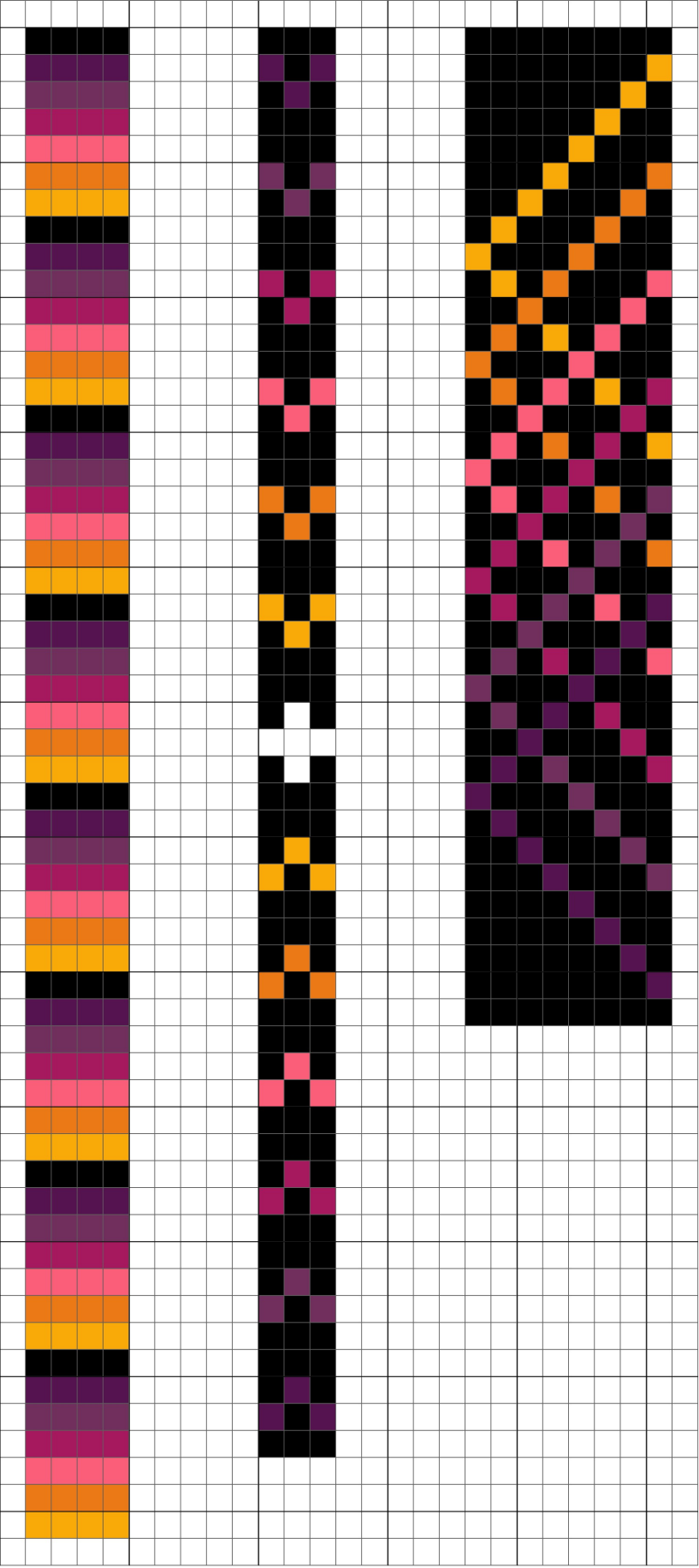
Psyche Checkers Color



Psyche Space Color



Psyche Patterns Color



Psyche Checker BW

A	A	B	B	C	C	D	D	E	E	F	F
A	A	B	B	C	C	D	D	E	E	F	F
A	F	B	A	C	B	D	C	E	D	F	E
F	A	A	B	B	C	C	D	D	E	E	F
A	A	B	B	C	C	D	D	E	E	F	F
A	A	B	B	C	C	D	D	E	E	F	F
A	E	B	F	C	A	D	B	E	C	F	D
E	A	F	B	A	C	B	D	C	E	D	F
A	A	B	B	C	C	D	D	E	E	F	F
A	A	B	B	C	C	D	D	E	E	F	F
A	D	B	E	C	F	D	A	E	B	F	C
D	A	E	B	F	C	A	D	B	E	C	F
A	A	B	B	C	C	D	D	E	E	F	F
A	A	B	B	C	C	D	D	E	E	F	F
A	C	B	D	C	E	D	F	E	A	F	B
C	A	D	B	E	C	F	D	A	E	B	F
A	A	B	B	C	C	D	D	E	E	F	F
A	A	B	B	C	C	D	D	E	E	F	F
A	B	B	C	C	D	D	E	E	F	F	A
B	A	C	B	D	C	E	D	F	E	A	F
A	A	B	B	C	C	D	D	E	E	F	F
A	A	B	B	C	C	D	D	E	E	F	F
B	A	C	B	D	C	E	D	F	E	A	F
A	B	B	C	C	D	D	E	E	F	F	A
A	A	B	B	C	C	D	D	E	E	F	F
A	A	B	B	C	C	D	D	E	E	F	F
C	A	D	B	E	C	F	D	A	E	B	F
A	C	B	D	C	E	D	F	E	A	F	B
A	A	B	B	C	C	D	D	E	E	F	F
A	A	B	B	C	C	D	D	E	E	F	F
D	A	E	B	F	C	A	D	B	E	C	F
A	D	B	E	C	F	D	A	E	B	F	C
A	A	B	B	C	C	D	D	E	E	F	F
A	A	B	B	C	C	D	D	E	E	F	F
E	A	F	B	A	C	B	D	C	E	D	F
A	E	B	F	C	A	D	B	E	C	F	D
A	A	B	B	C	C	D	D	E	E	F	F
A	A	B	B	C	C	D	D	E	E	F	F
F	A	A	B	B	C	C	D	D	E	E	F
A	F	B	A	C	B	D	C	E	D	F	E
A	A	B	B	C	C	D	D	E	E	F	F
A	A	B	B	C	C	D	D	E	E	F	F

Psyche Space BW

A	A	B	B	C	C	D	D	E	E	F	F							G	G	G	G	A	A	A	B	C		
A	A	B	B	C	C	D	D	E	E	F	F							G	G	G	A	A	A	A	C	C		
A	A	B	B	C	C	D	D	E	E	F	F							G	G	G	A	H	A	B	C	C	D	
A	E	B	F	C	A	D	B	E	C	F	D							G	G	A	A	A	B	B	C	C	D	
E	A	F	B	A	C	B	D	C	E	D	F							G	A	A	A	B	B	C	C	D	D	
A	A	B	B	C	C	D	D	E	E	F	F							A	A	A	B	B	C	C	D	D	F	
A	A	B	B	C	C	D	D	E	E	F	F							A	A	B	B	C	C	D	D	E	F	
D	A	E	B	F	C	A	D	B	E	C	F							A	A	B	B	C	C	D	E	H	F	
A	D	B	E	C	F	D	A	E	B	F	C							A	B	B	C	D	D	E	F	F	F	
A	A	B	B	C	C	D	D	E	E	F	F							B	B	C	D	D	E	E	F	F	F	
A	A	B	B	C	C	D	D	E	E	F	F							B	B	C	E	E	F	F	F	F	E	
A	C	B	D	C	E	D	F	E	A	F	B							B	C	D	E	F	F	H	F	F	F	E
C	A	D	B	E	C	F	D	A	E	B	F							C	C	E	F	F	H	H	H	E	E	
A	A	B	B	C	C	D	D	E	E	F	F							C	D	E	F	F	F	H	E	E	D	
A	A	B	B	C	C	D	D	E	E	F	F							D	E	F	F	F	F	E	D	D	D	
A	A	B	G	G	G	G	G	E	E	F	F							D	E	F	F	F	F	E	D	D	D	
A	A	B	G	G	C	D	G	G	E	E	F	F						D	E	F	F	F	E	E	D	C	C	
A	A	B	G	G	C	D	G	G	E	E	F	F						D	E	F	F	F	E	D	C	C	C	
A	A	B	G	G	G	G	G	E	E	F	F							D	E	F	F	F	E	D	C	C	B	
A	A	B	G	G	C	D	D	E	E	F	F							E	F	F	F	H	E	D	D	C	B	A
A	A	B	G	G	C	D	D	E	E	F	F							E	F	F	F	E	D	C	B	A	A	
A	A	B	B	C	C	D	D	E	E	F	F							F	F	F	E	E	D	C	B	A	G	
A	A	B	B	C	C	D	D	E	E	F	F							F	F	F	E	D	C	C	A	G	G	
A	A	B	B	C	C	D	D	E	E	F	F							F	F	F	E	D	C	C	A	G	G	
A	A	B	B	C	C	D	D	E	E	F	F							F	F	F	E	D	C	C	A	G	G	
A	A	B	B	C	C	D	D	E	E	F	F							F	F	F	E	D	C	C	A	G	G	
A	A	B	B	C	C	D	D	E	E	F	F							F	F	F	E	D	C	C	A	G	G	
A	A	B	B	C	C	D	D	E	E	F	F							F	F	F	E	D	C	C	A	G	G	
A	A	B	B	C	C	D	D	E	E	F	F							F	F	F	E	D	C	C	A	G	G	
A	A	B	B	C	C	D	D	E	E	F	F							F	F	F	E	D	C	C	A	G	G	
A	A	B	B	C	C	D	D	E	E	F	F							F	F	F	E	D	C	C	A	G	G	
A	A	B	B	C	C	D	D	E	E	F	F							F	F	F	E	D	C	C	A	G	G	
A	A	B	B	C	C	D	D	E	E	F	F							F	F	F	E	D	C	C	A	G	G	
A	A	B	B	C	C	D	D	E	E	F	F							F	F	F	E	D	C	C	A	G	G	
A	A	B	B	C	C	D	D	E	E	F	F							F	F	F	E	D	C	C	A	G	G	
A	A	B	B	C	C	D	D	E	E	F	F							F	F	F	E	D	C	C	A	G	G	
A	A	B	B	C	C	D	D	E	E	F	F							F	F	F	E	D	C	C	A	G	G	
A	A	B	B	C	C	D	D	E	E	F	F							F	F	F	E	D	C	C	A	G	G	
A	A	B	B	C	C	D	D	E	E	F	F							F	F	F	E	D	C	C	A	G	G	
A	A	B	B	C	C	D	D	E	E	F	F							F	F	F	E	D	C	C	A	G	G	
A	A	B	B	C	C	D	D	E	E	F	F							F	F	F	E	D	C	C	A	G	G	
A	A	B	B	C	C	D	D	E	E	F	F							F	F	F	E	D	C	C	A	G	G	
A	A	B	B	C	C	D	D	E	E	F	F							F	F	F	E	D	C	C	A	G	G	
A	A	B	B	C	C	D	D	E	E	F	F							F	F	F	E	D	C	C	A	G	G	
A	A	B	B	C	C	D	D	E	E	F	F							F	F	F	E	D	C	C	A	G	G	
A	A	B	B	C	C	D	D	E	E	F	F							F	F	F	E	D	C	C	A	G	G	
A	A	B	B	C	C	D	D	E	E	F	F							F	F	F	E	D	C	C	A	G	G	
A	A	B	B	C	C	D	D	E	E	F	F							F	F	F	E	D	C	C	A	G	G	
A	A	B	B	C	C	D	D	E	E	F	F							F	F	F	E	D	C	C	A	G	G	
A	A	B	B	C	C	D	D	E	E	F	F							F	F	F	E	D	C	C	A	G	G	
A	A	B	B	C	C	D	D	E	E	F	F							F	F	F	E	D	C	C	A	G	G	
A	A	B	B	C	C	D	D	E	E	F	F							F	F	F	E	D	C	C	A	G	G	
A	A	B	B	C	C	D	D	E	E	F	F							F	F	F	E	D	C	C	A	G	G	
A	A	B	B	C	C	D	D	E	E	F	F							F	F	F	E	D	C	C	A	G	G	
A	A	B	B	C	C	D	D	E	E	F	F							F	F	F	E	D	C	C	A	G	G	
A	A	B	B	C	C	D	D	E	E	F	F							F	F	F	E	D	C	C	A	G	G	
A	A	B	B	C	C	D	D	E	E	F	F							F	F	F	E	D	C	C	A	G	G	
A	A	B	B	C	C	D	D	E	E	F	F							F	F	F	E	D	C	C	A	G	G	
A	A	B	B	C	C	D	D	E	E	F	F							F	F	F	E	D	C	C	A	G	G	
A	A	B	B	C	C	D	D	E	E	F	F							F	F	F	E	D	C	C	A	G	G	
A	A	B	B	C	C	D	D	E	E	F	F							F	F	F	E	D	C	C	A	G	G	
A	A	B	B	C	C	D	D	E	E	F	F							F	F	F	E	D	C	C	A	G	G	
A	A	B	B	C	C	D	D	E	E	F	F							F	F	F	E	D	C	C	A	G	G	
A	A	B	B	C	C	D	D	E	E	F	F							F	F	F	E	D	C	C	A	G	G	
A	A	B	B	C	C	D	D	E	E	F	F							F	F	F	E	D	C	C	A	G	G	
A	A	B	B	C	C	D	D	E	E	F	F							F	F	F	E	D	C	C	A	G	G	
A	A	B	B	C	C	D	D	E	E	F	F							F	F	F	E	D	C	C	A	G	G	
A	A	B	B	C	C	D	D	E	E	F	F							F	F	F	E	D	C	C	A	G	G	
A	A	B	B	C	C	D	D	E	E	F	F							F	F	F	E	D	C	C	A	G	G	
A	A	B	B	C	C	D	D	E	E	F	F							F	F	F	E	D	C	C	A	G	G	
A	A	B	B	C	C	D	D	E	E	F	F							F	F	F	E	D	C	C	A	G	G	
A	A	B	B	C	C	D	D	E	E	F	F							F	F	F	E	D	C	C	A	G	G	
A	A	B	B	C	C	D	D	E	E	F	F							F	F	F	E	D	C	C	A	G	G	
A	A	B	B	C	C	D	D	E	E	F	F							F	F	F	E	D	C	C	A	G	G	
A	A	B	B	C	C	D	D	E	E	F	F							F	F	F	E	D	C	C	A	G	G	
A	A	B	B	C	C	D	D	E	E	F	F							F	F	F	E	D	C	C	A	G	G	
A	A	B	B	C	C	D	D	E	E	F	F							F	F	F	E	D	C	C	A	G	G	
A	A	B	B	C	C	D	D	E	E	F	F							F	F	F	E	D	C	C	A	G	G	
A	A	B	B	C	C	D	D	E	E	F	F							F	F	F	E	D	C	C	A	G	G	
A	A	B	B	C	C	D	D	E	E	F	F							F	F	F	E	D	C	C	A	G	G	
A	A	B	B	C	C	D	D	E	E	F	F							F	F	F	E	D	C	C	A	G	G	
A	A	B	B	C	C	D	D	E	E	F	F							F	F	F	E	D	C	C	A	G	G	
A	A	B	B	C	C	D	D	E	E	F	F							F	F	F	E	D	C	C	A	G	G	
A	A	B	B	C	C	D	D	E	E	F	F							F	F	F	E	D	C	C	A	G	G	
A	A	B	B	C	C	D	D	E	E	F	F							F	F	F	E	D	C	C	A	G	G	
A	A	B	B	C	C	D	D	E	E	F	F							F	F	F	E	D	C	C	A	G	G	
A	A	B	B	C	C	D	D	E	E	F	F							F	F	F	E	D	C	C	A	G	G	
A	A	B	B	C	C	D	D	E	E	F	F							F	F	F	E	D	C	C	A	G	G	
A	A	B	B	C	C	D	D	E	E	F	F							F	F	F	E	D	C	C	A	G	G	
A	A	B	B	C	C	D	D	E	E	F	F							F	F	F								

Psyche Patterns BW

