

# Construction

Psyche Inspired

Isaac Wisdom

♩ = 160

*Straight*

*Swing*

Trumpet

Musical notation for the Trumpet part, starting with a treble clef, a key signature of one sharp (F#), and a 4/4 time signature. The notation includes quarter notes, eighth notes, and rests.

Alto Sax

Musical notation for the Alto Sax part, starting with a treble clef, a key signature of two sharps (F# and C#), and a 4/4 time signature. The notation includes quarter notes, eighth notes, and rests.

Tenor Sax

Musical notation for the Tenor Sax part, starting with a treble clef, a key signature of one sharp (F#), and a 4/4 time signature. The notation includes quarter notes, eighth notes, and rests.

Trombone

Musical notation for the Trombone part, starting with a bass clef, a key signature of one flat (Bb), and a 4/4 time signature. The notation includes quarter notes, eighth notes, and rests.

Piano

Musical notation for the Piano part, consisting of a grand staff with treble and bass clefs, a key signature of one flat (Bb), and a 4/4 time signature. The notation includes quarter notes and rests.

Bass

Musical notation for the Bass part, starting with a bass clef, a key signature of one flat (Bb), and a 4/4 time signature. The notation includes quarter notes and rests.

Drums

Musical notation for the Drums part, starting with a drum clef and a 4/4 time signature. The notation includes quarter notes with 'x' marks and rests.

Tpt. 

Alto 

Tenor 

Tbn. 

Piano 

Bass 

Drums 

Chords: F7, Bb7, F7

Tpt. 
  
 Alto 
  
 Tenor 
  
 Tbn. 
  
 Piano 
  
 Bass 
  
 Drums 

Tpt. 
  
 Alto 
  
 Tenor 
  
 Tbn. 
  
 Piano 
  
 Bass 
  
 Drums 

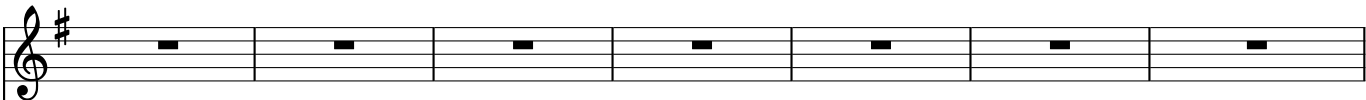
Chord progression: C7, Bb7, F7, C7

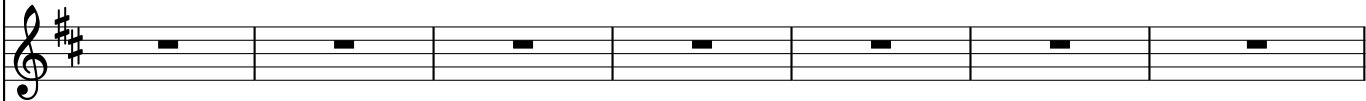
Tpt. 
  
 Alto 
  
 Tenor 
  
 Tbn. 
  
 Piano 
  
 Bass 
  
 Drums 


Tpt. 
  
 Alto 
  
 Tenor 
  
 Tbn. 
  
 Piano 
  
 Bass 
  
 Drums 


Tpt.   
 Alto   
 Tenor   
 Tbn.   
 Piano   
 Bass   
 Drums

Musical score for a jazz ensemble. The score includes staves for Trumpet (Tpt.), Alto, Tenor, Trombone (Tbn.), Piano, Bass, and Drums. The key signature is one sharp (F#) and the time signature is 4/4. The Tenor saxophone part features a solo starting in the fifth measure, indicated by a "G7 Solo" annotation and diagonal hatching. The Piano and Bass parts provide harmonic support with chords C7, Bb7, and F7. The Drums part shows a simple rhythmic pattern in the first two measures.

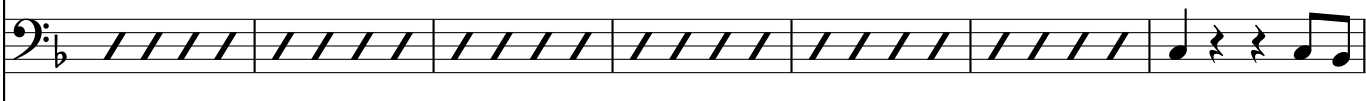
Tpt. 

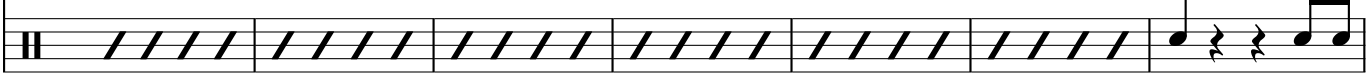
Alto 

Tenor 

Tbn. 

Piano 

Bass 

Drums 

Chord progressions for Tenor and Piano:
   
 Tenor: C7, G7, C7, D7
   
 Piano: Bb7, F7, Bb7, C7



Tpt.   
 Alto   
 Tenor   
 Tbn.   
 Piano   
 Bass   
 Drums

Chord changes:   
 C7 G7 D7 G7 C7   
 Bb7 F7 C7 F7 Bb7   
 F7 Bb7

Triplet markings (3) are present above the drum notation in measures 2 and 3.

Tpt. 

Alto 

Tenor 

Tbn. 

Piano 

Bass 

Drums 

Chord progressions: G7, C7, D7, F7, Bb7, C7, F7, Bb7

Tpt.   
 Alto   
 Tenor   
 Tbn.   
 Piano   
 Bass   
 Drums

C7 G7 D7   
 F7 Solo Bb7 F7   
 Bb7 F7 C7 F7 Bb7 F7   
 F7 Bb7 F7

3 3

Tpt. 

Alto 

Tenor 





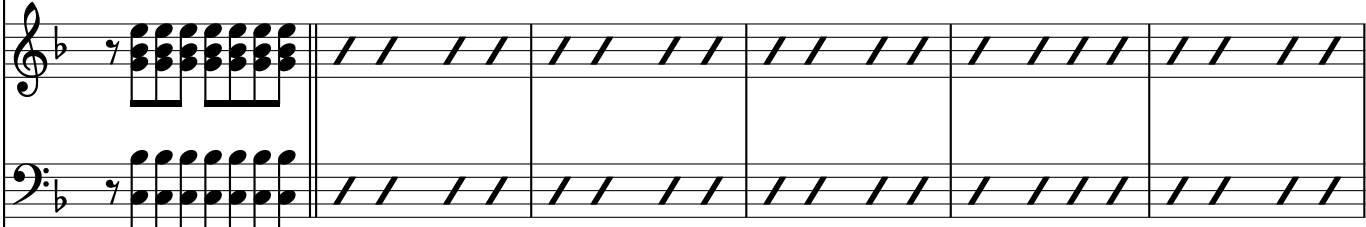


Tbn. 

Piano 

Bass 

Drums 

Chord progressions:  $Bb7$ ,  $C7$ ,  $Bb7$ ,  $F7$

Tpt. 
  
 Alto 
  
 Tenor 
  
 Tbn. 
  
 Piano 
  
 Bass 
  
 Drums 

Chord progression: C7, F7, Bb7, F7

Tpt. 
  
 Alto 
  
 Tenor 
  
 Tbn. 
  
 Piano 
  
 Bass 
  
 Drums 

Chord progression:  $Bb7$   $C7$   $Bb7$   $F7$

Tpt. 

Alto 

Tenor 

Tbn. 

Piano 

Bass 

Drums 

Chords: C7, F7, Bb7

Tpt.

Alto

Tenor

Tbn.

Piano

Bass

Drums



Tpt. 
  
 Alto 
  
 Tenor 
  
 Tbn. 
  
 Piano 
  
 Bass 
  
 Drums

Trumpet

# Construction

Psyche Inspired

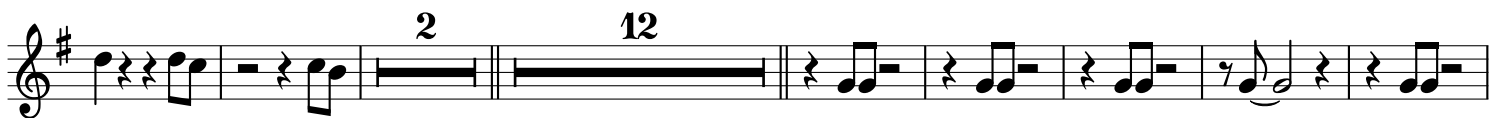
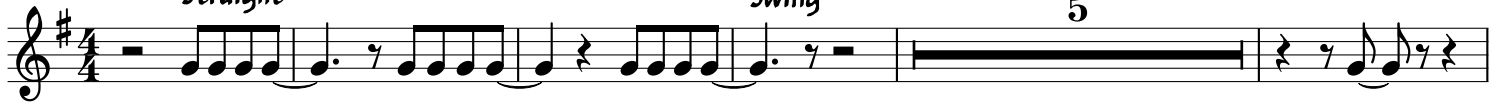
Isaac Wisdom

♩ = 160

Straight

Swing

5



Alto Sax

# Construction

Psyche Inspired

Isaac Wisdom

♩ = 160 Straight

Swing

Musical score for Alto Saxophone, titled "Construction" by Isaac Wisdom. The score is in 4/4 time with a key signature of two sharps (F# and C#). It consists of ten staves of music. The first staff begins with a tempo marking of 160 beats per minute and a "Straight" feel, which then changes to a "Swing" feel. The music features various rhythmic patterns, including eighth and sixteenth notes, and rests. There are several measures with repeat signs and first/second endings, labeled with "2" and "12". The score concludes with a double bar line.

Tenor Sax

# Construction

Psyche Inspired

Isaac Wisdom

♩ = 160

Straight

Swing

5



Piano

# Construction

Psyche Inspired

Isaac Wisdom

♩ = 160  
Straight

Swing

2

F7

Bb7

F7

Bb7

C7

Bb7

F7

C7

F7

Bb7

F7

Bb7

C7 Bb7 F7 C7 F7 Bb7 F7

Bb7 C7 Bb7 F7

C7 F7 Bb7 F7

Bb7 C7 Bb7 F7 C7

F7 Bb7 F7 Bb7

C7 Bb7 F7 C7 F7

Bb7 F7 Bb7 C7

Bb7 F7 C7 F7

Bb7 F7

Bb7 C7 Bb7 Bb7 F7





Drums

# Construction

Psyche Inspired

Isaac Wisdom

♩ = 160  
Straight

Swing  
2

2

3 3

3 3

3 3

3 3

3 3

3 3

3 3